

WASHOE COUNTY
COMMUNITY CLIMATE ACTION PLAN
2025 – 2030
DRAFT



August 2024

COMMUNITY CLIMATE ACTION PLAN (CAP): TABLE OF CONTENTS

The Community Climate Action Plan (CAP) defines actions that can help us protect our local climate, improve public health, and reduce risks associated with increased greenhouse gas (GHG) emissions, which trap heat in Earth’s atmosphere.

Document

- A. Why create a Community Climate Action Plan (CAP)?
- B. Improving public health by reducing emissions
- C. Creating a plan that reflects the voice of the community
- D. Prioritizing community-led actions with big, equitable impacts
- E. Toward Net Zero: 4 Strategies and 44 Actions for 2025 - 2030
 - 1. Strategy 1: Achieve County-wide Net Zero 2050 alignment
 - 2. Strategy 2: Implement net zero land use principles
 - 3. Strategy 3: Reduce emissions
 - 3a. Reduce transportation emissions
 - 3b. Reduce commercial building emissions
 - 3c. Reduce residential building emissions
 - 3d. Reduce waste
 - 4. Strategy 4: Produce cleaner energy
- F. Implementing the Community CAP
- G. How will we know if we're reducing emissions?
- H. How will we know if environmental health is improving?

Appendices

- Appendix 1: Community outreach process
- Appendix 2: Community Clean Air Survey feedback
- Appendix 3: Other regional plans that support climate action
- Appendix 4: “SMARTIE” goals for implementing climate Actions
- Appendix 5: KPIs that indicate emissions reduction progress

A) Why create a Community Climate Action Plan (CAP)?

Washoe County is a beautiful, diverse place that people treasure for its quality of life and connection to the outdoors. Working together, we can ensure the County remains a safe, secure and healthy place to live for generations to come.

The purpose of this Community Climate Action Plan (CAP) is to define actions that can help us protect our local climate, improve public health, and reduce risks associated with increased greenhouse gas (GHG) emissions, which trap heat in Earth's atmosphere.

Between 1970 and today, the local average annual temperature has increased 7.6° F, largely due to increased emissions and decisions about the way the region has been developed and grown. [The Reno area is the fastest warming metro in the US](#), and the local average annual temperature is projected to continue rising unless greenhouse gas (GHG) emissions are reduced.

This document lists specific actions that can reduce greenhouse gas (GHG) emissions and improve public well-being in Washoe County. Everyday activities like commuting, using air conditioning, and throwing away trash can all contribute to emissions. Everyone can participate in sustainability throughout our community, and this CAP is a guide for residents, businesses, and agencies to contribute to the County's Net Zero 2050 target.



B. Improving public health by reducing emissions

When we reduce emissions, we can experience many health benefits. First, air quality is better when we do not burn fossil fuels. For example, internal combustion engines (ICE) vehicles emit dangerous gases that are known or suspected to be cancer-causing. [These toxins can also cause noncancerous health effects such as neurological, cardiovascular, respiratory, reproductive and / or immune system damage.](#) Electric vehicles (EVs) do not create emissions. Walking, biking and riding scooters are also zero-emissions activities.

Second, we can reduce heat-related illnesses in our region by reducing emissions. As greenhouse gases (GHGs) accumulate in our atmosphere, they act like a blanket, trapping heat. With lower emissions, less heat is trapped. This could stabilize temperatures and help reduce [heat-related illnesses](#) ranging from minor issues such as sunburn, heat rash, and heat cramps to more severe conditions like heat stroke.

Third, we can advance environmental justice for those who experience disproportionate and adverse human health and environmental effects due to climate change. By reducing emissions and expanding environmental resources like trees, people in the most vulnerable parts of our County can breathe cleaner air.

Finally, reducing emissions can save people money. For example, insulating homes can reduce energy bills. These savings can help build wealth, and [wealth is linked to better overall health outcomes.](#)



C. Creating a plan that represents the voice of the community

Reducing GHG emissions is important because it can improve air quality and reduce extreme heat. We asked Washoe County residents directly about climate-related health impacts and about their interest in actions that can help reduce emissions. Between April – October 2024, we heard feedback from over 1,000 people (see **Appendix 1**):

- **506 people** replied to the online survey “Clean Air: Transportation & Residential Energy Use” (see results in **Appendix 2**)
- **300 people** voted on emissions reduction ideas at Washoe County’s table at the Earth Day festival
- **55 people** participated in one of our 6 listening sessions (4 in-person, 2 virtual)
- **33 community-groups, agencies, or operators** participated in small-group feedback sessions
- **8 Washoe County Citizen Advisory Board (CABs)** heard a public comment about the plan; 2 CABs requested a presentation that included question and answer
- **TBD# people** commented on the draft Climate Action Plan

This Climate Action Plan (CAP) directly responds to the community’s experience with health impacts due to the warming climate. In particular, this CAP prioritizes actions that can improve air quality and reduce energy bills for everyone, especially low-income residents, people of color, rural residents, youth, and seniors.



D. We prioritize community-led actions with big, equitable impacts

Washoe County’s vision is to “be the social, economic and policy leadership force in Nevada and the western United States.” This Climate Action Plan is inspired by that vision.

Activating the community. Feedback from community members shaped this plan, and leadership from community members will help make this plan a reality. The concise strategies in this plan are designed to be easily remembered and communicated. The actions listed in this plan are specific and tactical. We do not want this plan to sit in a binder on a shelf; we want it to make a difference in people’s lives!

Leading with equity. Vulnerable populations, such as low-income families, seniors, children, and people with respiratory conditions, are often the first to feel negative impacts of climate change. People living in [neighborhoods designated “Environmental Justice \(EJ\) Concern” by the Environmental Protection Agency \(EPA\)](#) deserve improved environmental and economic well-being. “EJ Concern” communities in Washoe County also include large Hispanic and Native American populations whose needs must be prioritized.

Representing the diversity of Washoe County. The best climate solutions may vary between urban and suburban Reno, Sparks, and Sun Valley (population density 1,500+ people / square mile), forested Incline Village (population density 400+ people / square mile), and rural Gerlach (population 100). This plan has actions that can be applied in each type of community. This plan also aligns with climate-related plans that already exist in our region. (See **Appendix 3**).

Acting with urgency. Climate change is impacting people today. The sooner we start reducing greenhouse gas emissions, the sooner we can experience better air quality and reduce longer-term impacts such as increasing heat. To move quickly, Washoe County is prioritizing mitigation (emissions reduction) actions that have the largest GHG reduction potential and actions that already have community support, momentum, and funding. Further, we favor actions that *also* support adaptation (ability to continue operating in a changing climate) and / or resilience (ability to respond to crisis).



E. Toward Net Zero: 4 Strategies and 44 Actions for 2025-2030

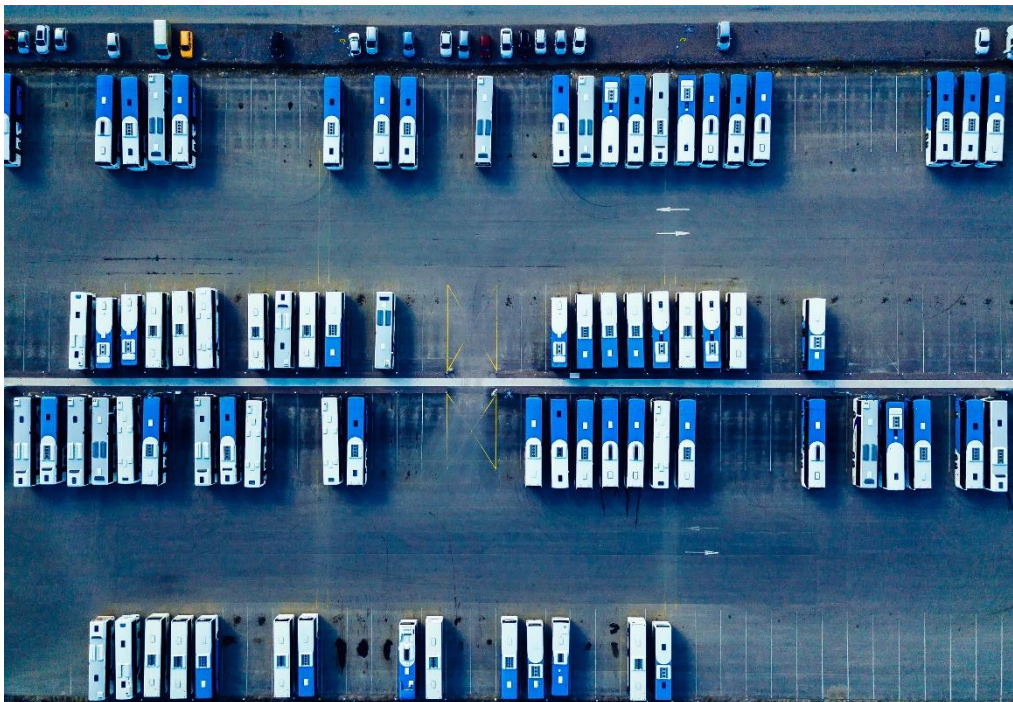
This Climate Action Plan has 4 Strategies:

- 1) Achieve County-wide Net Zero 2050 alignment**
- 2) Implement net zero land-use principles**
- 3) Reduce emissions**
- 4) Produce cleaner energy**

Tier 1. These 44 Actions will help Washoe County implement these Strategies. We selected Tier 1 actions based on the values described on the previous page, including these specific criteria: potential size of GHG emissions reduction; equity as a primary outcome; community enthusiasm; existing alignment with partners; the County’s authority to act; and available resources and funding.

Tier 2. These Actions can also help reduce emissions, but they may not meet many of the criteria listed in Tier 1. These Actions may be changed to Tier 1 if one of the criteria above changes. For example, we may move something from Tier 2 to Tier 1 if a new funding source emerges.

The numbers next to each Action in Strategy sections below do not indicate ranking. They are simply reference numbers to track Actions.



Strategy 1: Achieve County-wide Net Zero 2050 alignment

If public agencies, private businesses, and residents in Washoe County all work together toward the Net Zero 2050 target, we can lower emissions more quickly. Education is a recurring theme in community conversations. This strategy seeks to educate and align.

Tier 1 Actions

Washoe County leads by example

1. **Measure Community GHG emissions** every 5 years. The next inventories will be for 2024 (in 2025) and for 2029 (in 2030).
2. Create a public dashboard to **track Community CAP actions** by the end of 2025. Post public updates on Community CAP actions at least once annually.
3. Create **forecast of estimated emissions reductions** through 2050 based on Community CAP actions by 2025.
4. Washoe County will write and implement a **County Operations Climate Action Plan**.
5. **Document the health impacts of air pollution and heat** on Washoe County and its residents to improve public communication, budget planning, and grant application success.

Local agencies and municipalities are aligned around Net Zero

6. In preparation for Waste Management franchise agreement negotiations in 2028 (current contract ends in 2030), **identify strategies to reduce waste and waste-related emissions** for the future.
7. By 2030, identify **long-term funding strategy for transportation infrastructure** in Washoe County that is not the gas tax.
8. Advocate that **Net Zero 2050 be a foundational premise in RTC Washoe's "Regional Transportation Plan 2050"** update in 2025.
9. Share resources, advocate adoption of **Net Zero 2050 policy with City of Sparks**



Strategy 1: Achieve County-wide Net Zero 2050 alignment

Tier 1 Actions, continued

Businesses registered with Washoe County have a sustainability plan or certification

10. Amongst all businesses registered with Washoe County, grow the number of businesses with sustainability plans or green business certifications (eg Nevada Green Business Certification, etc.) to 70% by 2030.

The Community builds “climate fluency” (knowledge about GHGs and how to reduce them)

11. **Grow Washoe County Sustainability email list** to an audience of 5,000
12. Send a **spotlight communication** about Washoe County's Climate Action Activities at least quarterly
13. Participate in at least two **community events** across the region each year to share information about Climate Action Planning and to hear residents' continued feedback.
14. Develop **interactive communications** that allow individuals to take climate action and spread knowledge with others

Tier 2 Actions

45. Annually, document and **share projections of "Green Economy" trends** (eg HVAC installation, EV charger repair, Transit Drivers) to enable workforce partners to anticipate skills needed for the future

46. Support the implementation of **Washoe County Schools District’s sustainability plan**, including fleet of electric buses.

47. **Calculate Community-wide Scope 3 emissions** (eg building materials, purchased goods) for Washoe County. Make a plan to reduce them.



Strategy 2: Implement net zero land use principles

Land-use planning includes two elements: the built environment (buildings, roads, infrastructure) and the natural environment. Different building types cause different amounts of GHG emissions, and the locations of those buildings influence transportation emissions. A well-managed natural environment can absorb GHGs from the atmosphere and minimize the impacts of floods, fires and other natural disasters. Washoe County, a permitting authority, is implementing [Envision Washoe 2040](#), the County's Master Plan. Approved in 2023, it includes sustainable land use principles and policies designed to reduce development-related emissions and protect the environment.

Tier 1 Actions

Developing the Built Environment Responsibly

15. Advocate for a **planning manager to be assigned to the Envision 2040 Master Plan** by 2025 to facilitate implementation of GHG-reducing elements of Envision 2040.

Enhancing Green Spaces to Sequester (Remove) Carbon

16. **Support Tribes** with their environmental stewardship and Land Use plans

17. Partner with regional jurisdictions, agencies, stakeholders and citizens to launch a **Community Forestry Program**. Plant 4,700 trees in Low-Income and Disadvantaged Communities (LIDACs) by 2030. Launch Community Forestry Program to support.

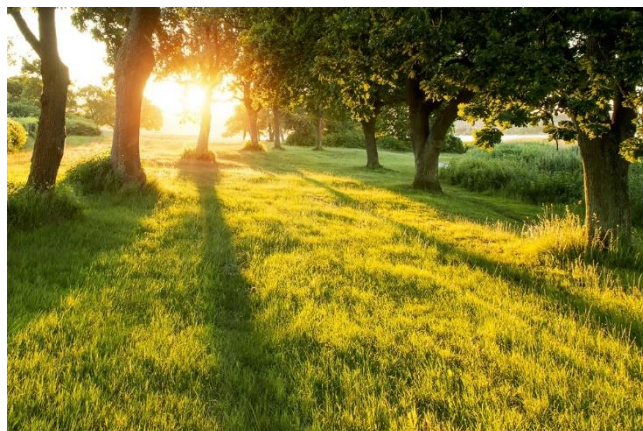
Tier 2 Actions

48. Conduct **Direct Air Capture (DAC)** carbon capture pilot project

49. Encourage **locally-grown and plant-rich diets**

50. **Support local farms** for carbon sequestration and vehicle mile traveled (VMT) benefits

51. Identify **incentives for private land owners to increase carbon sequestration** (removal) through local vegetation, while avoiding increased fire risk.

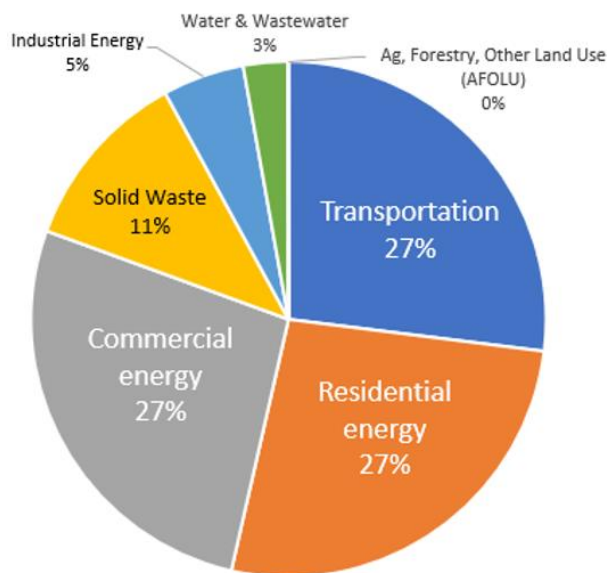


Strategy 3: Reduce Emissions

The day-to-day activities of residents and businesses require energy. Today, most of the energy in Washoe County is created by burning fossil fuels, which is the leading source of GHG emissions. By burning fewer fossil fuels, we reduce emissions. To reach Washoe County’s target of net zero GHG emissions by 2050, we must begin reducing fossil fuel emissions in all sectors.

The data below shows sources of emissions in 2021 across all of Washoe County, including unincorporated Washoe County, Reno, and Sparks. These numbers are preliminary.

- Energy use in **Buildings** is the top source of GHG emissions in Washoe County, causing ~**46%** of total emissions. ~23% of Buildings emissions come from Commercial Buildings while ~23% come from Residential Buildings.
- **Transportation** is the next largest source of emissions, causing ~**27%** of emissions.
- Emissions from **Solid Waste**—that is, emissions caused by landfill off-gassing—causes ~**11%** of Washoe County’s community emissions.
- The energy used to produce **Potable Water** and to process **Wastewater** causes ~**3%** of emissions in Washoe County. Emissions from Industrial energy use in Washoe County is very small (~1%), and emissions caused by Agriculture, Forestry, and Other Land Use is also very small (<1%).



Preliminary 2021 Washoe County Community GHG Emissions

Strategy 3a: Reduce transportation emissions

In the transportation sector, we focus on two goals. The first goal is reduce vehicles on the road and total vehicle miles traveled (VMT). Fewer VMT reduce fuel use, reduce congestion, and reduce wear-and-tear on our roads. The second goal is to shift from internal combustion engine (ICE) vehicles to cleaner vehicles such as zero emissions vehicles (ZEVs), or bicycles, for example. Active modes like walking, biking and riding scooters also reduce emissions, improve public health, and reduce the amount of road space needed for people to move around the region.

Tier 1 Actions

Reduce Single Occupancy Vehicle (SOV) trips

18. Create an online hub to **amplify information about alternatives to single occupancy vehicles (SOVs) for recurring trips**. (eg Safe Routes to School, carpooling, existing transit or bicycle infrastructure)
19. Create and distribute **sustainable transportation guides for Washoe County's** 12 libraries, 49 parks, ~50 voting locations, and 14 buildings with walk-in services.
20. Pursue a **Trip Reduction Ordinance** for Washoe County.
21. Align regional efforts to **reduce SOV trips to the region's top employment areas** (eg Tahoe-Reno Industrial Center (TRIC), Reno / Sparks casinos, Lake Tahoe recreation)
22. Expand reliable broadband across Washoe County to **enable more telecommuting**.
23. Work with **transportation and tourism partners to educate visitors about car-free** ways to enjoy Reno, Sparks, Lake Tahoe, and other points of interest in and around Washoe County.



Strategy 3a: Reduce transportation emissions

Tier 1 Actions (continued)

Expand adoption of Zero Emissions Vehicles (ZEVs)

24. **Support and accelerate RTC Washoe's Walk and Roll plan** by seeking grant funding, collecting data to accelerate the 12 neighborhood plans being designed by 2030.

25. By 2026, create a regional plan for an **equitable network of EV chargers**; by 2028, create a plan to fund the EV charging network.

26. Create, support, and/or accelerate a plan to **make Washoe County's I-80 corridor the nationwide leader in alternative fuel charging**.

Tier 2 Actions

52. Provide **rebates for e-bikes, e-cargo bikes, e-motorcycles, e-scooters** to individuals and businesses. Provide incentives particularly for LIDACs and businesses operating in low-income areas to replace old polluting vehicles with these technologies.

53. Support the federal proposal to **extend the Capitol Corridor rail line** to include Reno.

54. **High speed rail between Reno and Las Vegas** to reduce the ~5,000 flights per year between the cities.

55. Support **expanded ZEV car-sharing**.

56. Support **expanded ZEV ride-sharing**.

57. Support **low carbon sustainable aviation, marine, heavy duty truck, rail fuel development**.



Strategy 3b: Reduce commercial building emissions

The least expensive energy is energy that is never used. Increasing a building's energy efficiency saves businesses both energy and money. Existing buildings can save energy by utilizing best practices, technical assistance and financing. New buildings can benefit from energy-saving codes and permitting.

Tier 1 Actions

27. Establish an opt-in **Building Performance System (BPS)** for commercial buildings to identify energy efficiency opportunities and support.

28. Adopt "**ambitious**" (instead of "standard") **2024 and 2027 International Energy Conservation Codes (IECC)**.

29. **Integrate sustainability into government procedures** by providing resources during planning and permitting processes (eg provide information about heat pumps to requestors of permits to install new chillers / heaters / boiler).

Tier 2 Actions

58. Transition from **gas- to electric-powered lawn equipment**.

59. **Expand and track the number of LEED-certified (or equivalent) buildings** in Washoe County. Share case studies to increase awareness and adoption widely with the public and developers.



Strategy 3c: Reduce residential building emissions

Just like commercial buildings, the least expensive energy is energy that is never used. Washoe County wants to empower all home owners and renters to pursue sustainable upgrades for their homes, with emphasis on saving people money by reducing energy bills. Many State of Nevada and federal rebates, incentives, and programs exist right now for energy efficiency audits and upgrades, and many financing opportunities are available for energy efficiency projects (e.g. electrifying appliances, weatherizing homes). Expanding access to these resources will reduce emissions.

Tier 1 Actions

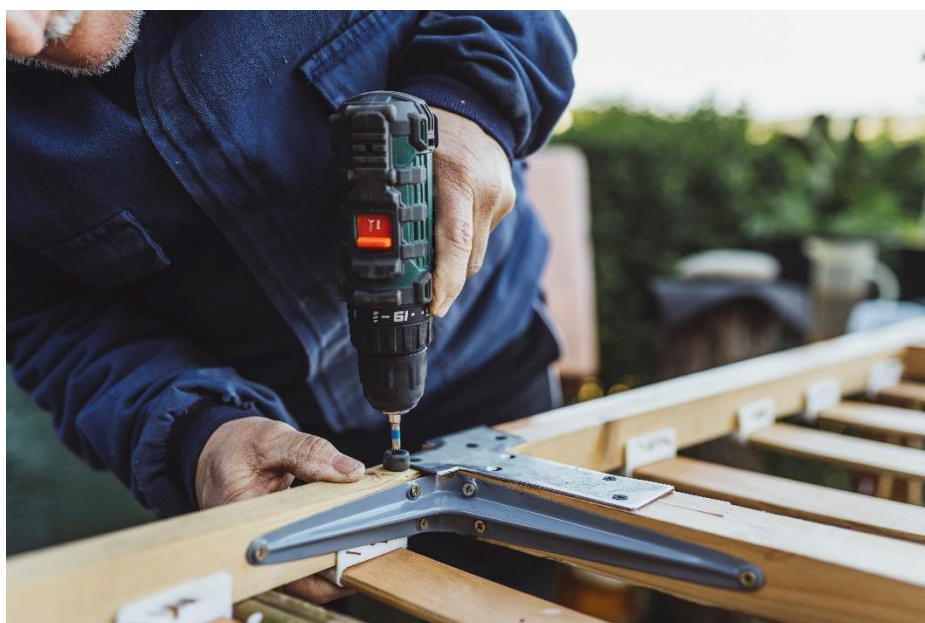
30. Create virtual and / or physical **resource hubs for homeowners and renters** to learn how to make sustainable upgrades.

31. **Amplify awareness of existing home energy efficiency programs** such as NV Energy's free energy efficiency audit; Nevada Clean Energy Fund's Residential Energy Upgrade Program (RE-UP); Nevada Housing Division's Weatherization Assistance Program (WAP); and the federal Home Electrification and Appliance Rebates (HEAR) program.

32. Create a program to **convert mobile home power from gas to electric**.

33. By 2030, implement at least one **sustainable retrofit incentive for rental properties serving income-qualified tenants**.

34. By 2026, **create toolkit, identify incentives, and identify lending facilities for owners of multi-family, affordable housing, and senior living facilities** to make their buildings more energy-efficient.



Strategy 3c: Reduce residential building emissions

Tier 2 Actions

60. Provide one **free induction burner with a compatible skillet and pot** to each household in Washoe County on an opt-in basis.
61. **Further subsidize heat pump purchases** beyond Federal incentives to achieve cost-parity with gas heat / air units
62. **Support alternative financing mechanisms to support lower emission buildings**, such as community land trusts, on-bill financing, and an emissions-reducing Revolving Loan Fund.
63. **Review and upgrade HOA policies that do not align with sustainability goals**, eg installation of heat pump, installation of solar panels, ability to line-dry clothes.

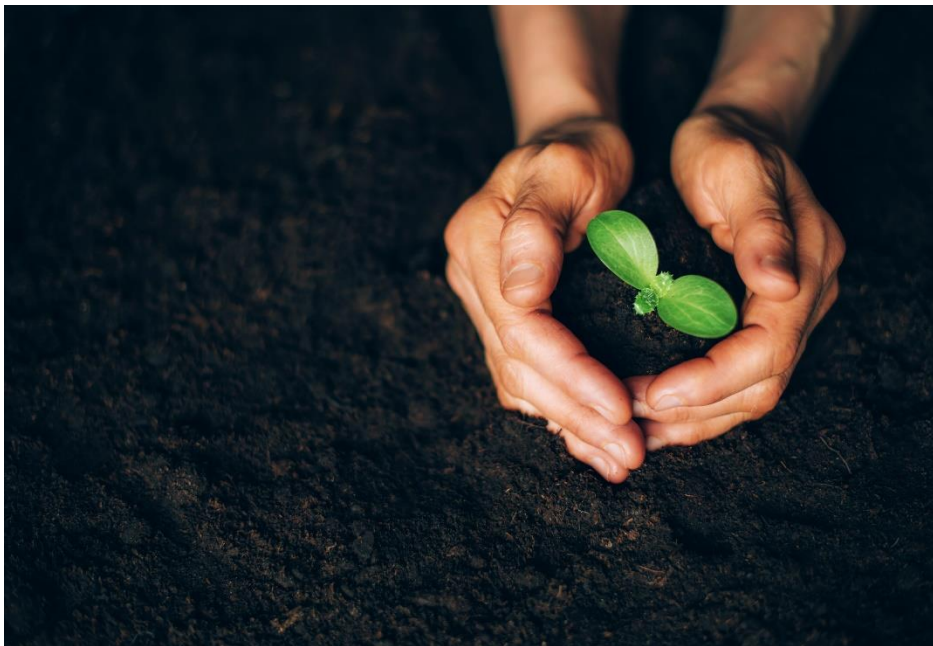


Strategy 3d: Reduce waste

Solid waste (trash, recycling, food waste, and green waste) accounts for only ~10% of total emissions in Washoe County. However, waste is a daily, tangible reminder about sustainability, and many community members are passionate about the topic. Washoe County will pursue Actions for two services that are often delivered through local government: compost and yard waste. Simultaneously, Washoe County will provide administrative support to community members who are pursuing “Reduce, Reuse, Refuse, Recycle, Repair” principles in various local waste streams. The purpose of these waste reduction efforts is to minimize the content that goes to landfill, because landfills produce GHGs that add to the County’s emissions total.

Tier 1 Actions

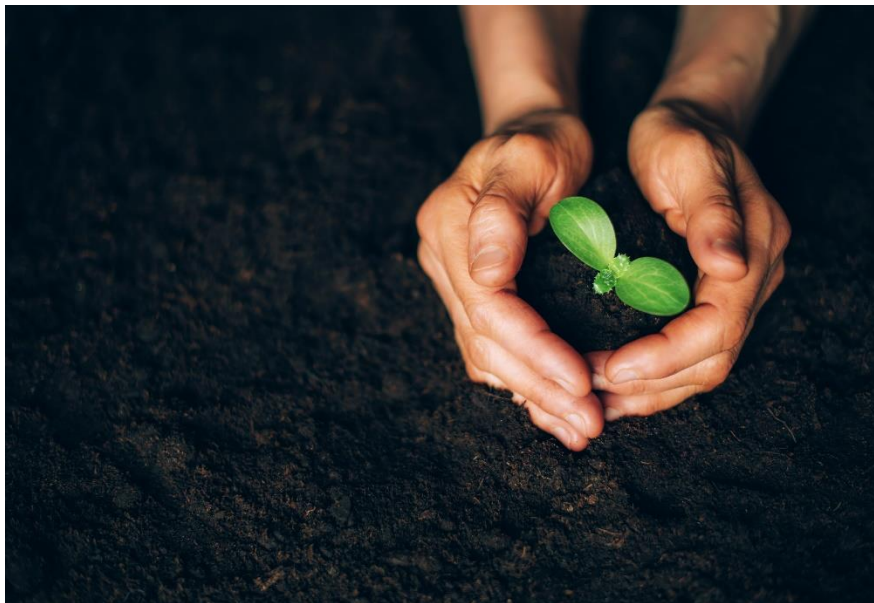
35. Identify and support **food-waste composting** pilot projects and providers for both residential and commercial needs.
36. Identify and support **green-waste composting** models and providers for both residential and commercial needs.
37. Provide **administrative support to community waste-reduction working groups.**



Strategy 3d: Reduce waste

Tier 2 Actions

64. Offer "**seed capital, other incentives, or support to local Washoe County or Northern Nevada entrepreneurs / organizations** who start and operate businesses designed to address local gaps in waste management (eg glass recycling, upcycling services, composting, reusable / refillable and other models or businesses that divert waste from landfills or accelerate a circular economy).
65. Support policies that **decrease the prevalence of single-use plastics**.
66. **Increase rate of recycling in multi-family housing and mobile homes** from the 2024 rate of 54%.
67. **Increase rate of recycling rate at commercial locations** from the 2024 rate of 9.5%.
68. Create a **sustainable building materials management toolkit** for businesses to reduce waste from construction, renovation, demolition, and retrofit projects. Outreach for the toolkit can include, but is not limited to, online resources, a builder's lunch-and-learn and local business network presentations.



Strategy 4: Produce cleaner energy

To reduce emissions, we need to burn fossil fuels less often. Currently, fossil fuels like natural gas are used to generate the energy we need for our homes and businesses. Washoe County's primary energy provider, NV Energy, has committed to 100% carbon-free sources by 2050 and 50% renewable electricity by 2030. Washoe County supports NV Energy's goals, including expanded options for residents and businesses to access and generate renewable energy in their communities.

Tier 1 Actions

38. **Review NV Energy's progress toward commitment of 50% electricity from renewable sources by 2030**; help remove barriers.
39. **Identify new federal programs to implement related to solar energy** (eg R-PACE); apply to new grants supporting expanded solar capacity
40. Identify opportunities and expand **distributed energy resources** like Community Solar, Solar Gardens, microgrids, smart-grids, behind-the-meter technology, and net metering.
41. Promote financing options available through the **existing Commercial Property-Assessed Clean Energy (C-PACE) Program** for local businesses.
42. Speed and streamline residential and commercial solar permitting through programs like **SolSmart**.
43. **Support implementation of grants, incentives and other federal funding opportunities** to expand solar, especially for low-income residents. (eg Nevada Clean Energy Fund's implementation of its Solar for All)
44. Increase use of Washoe County's renewable geothermal energy by ensuring that builders **understand and consider geothermal options** during the pre-construction phase of new buildings.



Strategy 4: Produce cleaner energy

Tier 2 Actions

69. **Provide input to NV Energy in advance of its next Integrated Resource Plan (IRP)** in 2028 to ensure NV Energy is set up for success to meet goal of 100% carbon-free resources by 2050
70. Support the development of **more binary technology geothermal power sources**.
71. Explore opportunities to expand **wind energy generation** (eg I-80 corridor or private residence micro turbines).
72. Partner with community members in a Low Income, Disadvantaged Community (LIDAC) to implement a **holistic low carbon transformation project**. (Demonstration project / pilot)
73. Support planning and implementation of **new renewable energy, energy storage, grid enhancement, green hydrogen, and biofuel systems**.



F. Implementing the Community CAP

Measuring Success A two-page draft project plan will be written for each Tier 1 Action (see example on the next page). Success for each of the 44 Actions will be measured using a “SMARTIE” goal that is specific to each Action. SMARTIE goals are **S**trategic, **M**easurable, **A**mbitious, **R**ealistic, **T**ime-bound, **I**nclusive, and **E**quitable. See draft SMARTIE goals for Tier 1 Actions in **Appendix 4**. Information about progress on Actions and SMARTIE goals will be shared in annual Community CAP updates, starting in 2026.

Adjusting Action Tiers Washoe County’s Sustainability team plans to begin activity on all Tier 1 Actions during fiscal years 2025 (July 2024 – June 2025) and 2026 (July 2025- June 2026). Starting in fiscal year 2026, the Sustainability team will provide annual updates to the community about progress on the Community Climate Action Plan. If the Sustainability team identifies a change in the “Tier” criteria for any of the Actions, the Tier of the action may be changed. This will allow the County to be adaptable to changes. For example, the award of grant funding could cause a Tier 2 action to move up to Tier 1.

“How do I Get Involved?” Each project plan has a section that describes specific ways you can participate in that Action. You can express interest in participating in a sustainability working group by completing a form on our website. And the County’s communication goals under Strategy 1 are designed to better inform our community about the County’s climate action, ways to make your voice heard, and ways to help implement the CAP.



F. Implementing the Community CAP

Draft Project Plan

Strategy 3d, Action 36



Identify and support food-waste composting pilot projects and providers for both residential and commercial needs

“SMARTIE” goal (Strategic, Measurable, Ambitious, Realistic, Time-bound, Inclusive, and Equitable): 100% of Washoe County businesses and residents have access to commercial or at-home composting by 2028

An equitable plan: This initiative will prioritize composting access in multi-family buildings and in tracts designated areas of Environmental Justice concern by the EPA.

Best practices: [San Francisco for curbside pick-up](#); [Minnesota for drop-off points](#)

Public benefits:

- Community modeling: Visible demonstration of daily individual climate action
- Healthy, local compost dirt can support the virtuous cycles of expanding community gardens, reduce food insecurity and improve plant health at parks and municipal properties.

How do I get involved?

There are several ways you can help accelerate composting in Washoe County:

- Write letters of support to Washoe County and other jurisdictions to advocate for better composting in the region.
- Start composting with an existing composting company like Down to Earth or Full Circle.
- Begin composting at your home or business and participate in community composting education and events
- Participate in Waste Management (WM) or other food-waste drop-off compost programs.
- Notify the County if you would like to be a commercial customer for compost soil.

Potential partners and stakeholders: City of Reno, City of Sparks, Carson City, interested businesses and landowners.

Potential operators: Waste Management (WM), Down to Earth Composting, Full Circle Composting, Nevada Recycling & Salvage, Mill or other private companies

Description of workplan:

- 1) Conduct a community-wide compost survey to understand community knowledge of and support for composting.
- 2) Explore composting providers, models, and pilot projects for food waste.
- 3) Support programs to expand home composting for residents.
- 4) Support food-waste compost models for businesses (grocery stores, restaurants, entertainment facilities).
- 5) Develop data-driven best practices to support future expansion of compost programs

Funding needs:

- a. [TBD%] Full Time Equivalent (FTE) staff needed
- b. [TBD\$] implementation expenses

G. How will we know if we're reducing emissions?

Washoe County commits to calculating its community greenhouse gas emissions at least every five years (**Strategy 1, Action 1**). This data will tell us whether total emissions are going down.

In between full greenhouse gas inventories, community-wide “key performance indicators,” or KPIs, can tell us whether our actions, combined with ongoing community activities, are resulting in outcomes that typically lead to emissions reductions (see **Appendix 5**).

For example, increased tree cover can result in lower emissions. For **Strategy 2, net zero land use**, we can use the Tree Equity score to learn whether tree cover is increasing.

Under **Strategy 3: Reduce emissions**, the KPIs vary by sector. For **transportation**, we expect emissions to go down if fewer vehicle miles are traveled, if more trips are taken by sustainable modes (eg biking or transit instead of gasoline vehicle), and if an increasing percent of vehicles on the road are Zero Emissions Vehicles (ZEVs) instead of gasoline. For **buildings**, lower energy use (measured in kWh) will produce lower emissions. For **waste**, fewer pounds of waste per person means fewer landfill emissions.

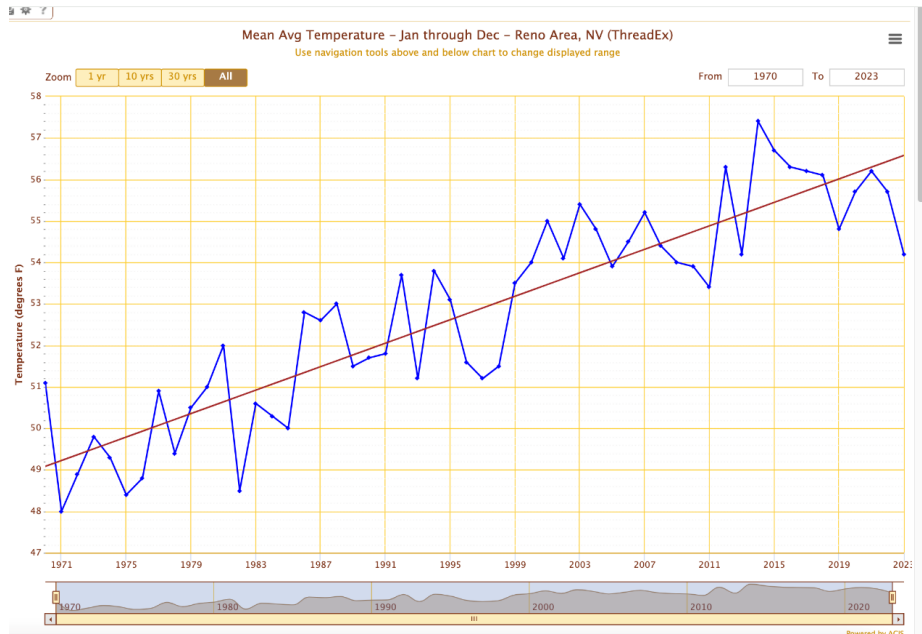
And in **Strategy 4, Produce cleaner energy**, we can track whether consumer natural gas use goes down, whether the % of renewable purchased energy goes up, and whether the number of kWh of community solar power goes up. These KPIs would all imply that GHG emissions are going down.

We believe the Actions in this plan can contribute directly to the outcomes listed in these KPIs. And if our region meets the targets for these operational KPIs, we are likely to see emissions reductions.



H. How will we know if environmental health is improving?

We will use standard measures for environmental health outcomes. We want to see the annual average temperature of Reno stay the same or decrease.



And we want to maintain 365 days each year in Washoe County with an Air Quality Index (AQI) of Green or Yellow. We will omit days with emergency events like local fire conditions when we do our calculations.

AQI Basics for Ozone and Particle Pollution			
Daily AQI Color	Levels of Concern	Values of Index	Description of Air Quality
Green	Good	0 to 50	Air quality is satisfactory, and air pollution poses little or no risk.
Yellow	Moderate	51 to 100	Air quality is acceptable. However, there may be a risk for some people, particularly those who are unusually sensitive to air pollution.
Orange	Unhealthy for Sensitive Groups	101 to 150	Members of sensitive groups may experience health effects. The general public is less likely to be affected.
Red	Unhealthy	151 to 200	Some members of the general public may experience health effects; members of sensitive groups may experience more serious health effects.
Purple	Very Unhealthy	201 to 300	Health alert: The risk of health effects is increased for everyone.
Maroon	Hazardous	301 and higher	Health warning of emergency conditions: everyone is more likely to be affected.

Finally, we will look reduced areas of Environmental Justice Concern to in the County, based on the Environmental Protection Agency's (EPA's) map.

APPENDICES

Appendix 1: Community Outreach Process

We are collecting feedback several different ways for this Climate Action Plan:

- A table at the Earth Day Festival
- Online survey (see results in **Appendix 2**)
- Public listening sessions
- Small group discussions with community groups and leaders
- Presentations to community groups, eg Green Business Network
- Presentations to Washoe County Citizens Advisory Boards (CABs)
- Discussions with elected officials
- Online public comment on draft Community Climate Action Plan (in progress)

As of August 2024, we have received feedback from >1,000 people.

Earth Day event, April 20, 2024



Appendix 1: Community Outreach Process

Survey invitation text that appeared on the Sustainability Website, May – July 2024

You are invited to participate in Washoe County’s “Clean Air: Transportation and Residential Energy Use” survey. Washoe County has a goal to reach “net zero” greenhouse gas emissions by 2050, and your responses to this survey will help us design an inclusive, equitable Sustainability and Climate Action Plan to achieve that goal. The survey is open to people who live and / or work in Washoe County, and it is estimated to take 10 minutes or less.

This survey will be open through July 3, 2024.

Clean Air in Washoe County: Transportation and Residential Energy Use survey.

Está invitado a participar en la encuesta "Aire Limpio: Transporte y uso de Energía Residencial" del Condado de Washoe. El Condado de Washoe tiene el objetivo de alcanzar emisiones “netas cero” de gases de efecto invernadero para 2050, y sus respuestas a esta encuesta nos ayudarán a diseñar un Plan de Acción Climático y de Sostenibilidad inclusivo y equitativo para lograr ese objetivo. La encuesta está abierta a personas que viven y/o trabajan en el Condado de Washoe y se estima que tomará 10 minutos o menos.

Esta encuesta estará abierta hasta el 3 de julio de 2024.

Aire Limpio en el Condado de Washoe: Encuesta de Transporte y Uso de Energía Residencial.

Appendix 1: Community Outreach Process

Public Listening Sessions



Listening session invitation text that appeared on the Sustainability website , May – June 2024 (continued on next page)

The Washoe County Sustainability Team invites you to participate in a listening session that will help us develop the County's first-ever Climate Action Plan. During this session, Washoe County staff will provide a 15-minute presentation about the goals of the plan. Then, attendees will participate in break-out discussions for 40 minutes about topics such as transportation, energy use, and water conservation & waste reduction in our region.

For more information, please visit the webpage corresponding to the listening session you would like to attend.

In-Person

- North Valleys Library, June 4, 5:30pm
- Sparks Library, June 17, 11am
- Incline Village Library, June 20, 11am
- South Valleys Library, June 22, 3pm

Virtual

- June 3, 5:30pm
- June 26, 12pm

Appendix 1: Community Outreach Process

Listening session invitation text that appeared on the Sustainability website, May – June 2024 (continued from previous page)

The content presented during each session will be the same, so you are encouraged to participate in the event that is the most convenient time and location for you.



You and family members of all ages are encouraged to attend. Books, puzzles, and coloring activities will be available for children during the session, and licensed childcare providers will be available to supervise children ages 2-9 during the session. Non-alcoholic beverages and light snacks will be provided.

Language interpretation will be facilitated during the session via the Wordly online tool, which attendees can access via their device's web browser using library wi-fi or via a device provided by the facilitator during the session. American Sign Language (ASL) interpretation can be requested via the RSVP form. Please request ASL interpretation one week before the event.

RSVPs are optional, though they help us plan for the event. Please visit the corresponding webpage to the listening session you would like to attend for a link to the RSVP form.

Appendix 1: Community Outreach Process

Small group discussions with community groups and leaders



Appendix 1: Community Outreach Process

List of community members contacted during CAP creation (continued on next page)

COMMUNITY

- Asian Pacific Islander American (APIA) Nevada
- Asian Community Development Council
- Black Community Collective
- Black Wall Street Reno
- CHISPA NV
- Citizens Climate Lobby (CCL)
- Climateers
- EcoMadres / Moms Clean Air Force
- Electrification Coalition
- Environmental Defense Fund (EDF)
- Faith in Action NV (FAINV)
- For Our Future NV Action Fund
- GreenVibe
- Keep Truckee Meadows Beautiful (KTMB)
- Make the Road Nevada / Nevada Environmental Justice Conference (NEJC)
- National Association for the Advancement of Colored People (NAACP), Reno-Sparks
- Natural Resources Defense Council (NRDC)
- Nevada Clinicians for Climate Action
- Nevada Conservation League (NCL)
- Nevada Green Institute
- Nevada Housing Coalition
- Nevada Outdoor Business Coalition
- Northern Nevada Marches Forward
- Progressive Leadership Alliance of Nevada (PLAN)
- Protect Our Winters
- Sierra Club
- Somos Votantes

- Southwest Energy Efficiency Project (SWEET)
- Third Act
- Tribal Minds Inc.
- Western Conservation Foundation
- Western Resource Advocates

NON-PROFIT OPERATORS

- Nevada Clean Energy Fund
- Reno Food Systems
- Soulful Seeds
- Urban Roots

BUSINESS AND WORKFORCE

- Blue Green Alliance
- Chamber of Commerce, Reno-Sparks
- Economic Development Association of Western Nevada (EDAWN)
- Nevada Chapter Associated General Contractors (AGC)
- Nevada Office of Workforce Innovation (OWINN)
- NevadaWorks
- NV Green Business Network
- Reno Sparks Convention and Visitors Authority (RSCVA)
- State of Nevada Department of Employment, Training & Rehabilitation

EDUCATION

- Envirolution
- JOIN Inc
- Truckee Meadows Community College
- University of Nevada, Sustainability
- University of Nevada, Latino Research Center
- Washoe County School District

Appendix 1: Community Outreach Process

List of community members contacted during CAP creation (continued from previous page)

TRIBES

- Pyramid Lake Paiute Tribe
- Reno-Sparks Indian Colony
- Summit Lake Paiute Tribe
- Washoe Tribe of NV and CA

OPERATORS

- NV Energy
- Plumas-Sierra Rural Electric Cooperative
- Surprise Valley Electrification Corp
- Southwest Gas

LOCAL GOVERNMENT

- City of Reno
- City of Sparks
- Gerlach General Improvement District (GID)
- Incline Village General Improvement District (GID)
- Palomino Valley General Improvement District (GID)
- Sun Valley General Improvement District (GID)
- North Lake Tahoe Fire Protection District

- Reno Tahoe International Airport (RTIA)
- RTC Washoe - Regional Transportation Commission

- Great Basin Water Co.
- Reno Stead Reclamation Facility
- Truckee Meadows Water Authority
- Truckee Meadows Water Reclamation Facility
- Waste Management

STATE & REGIONAL

- Nevada Governor's Office of Energy
- Nevada Office of Minority Health and Equity
- Northern Nevada Public Health
- Tahoe Regional Planning Agency (TRPA)
- Truckee Meadows Regional Planning Authority (TMRPA)

Appendix 1: Community Outreach Process

List of elected officials contacted during CAP creation (continued on next page)

Organization	District	Title	Name
Washoe County	District 1	Chair	Alexis Hill
Washoe County	District 5	Vice Chair	Jeanne Herman
Washoe County	District 2	Commissioner	Michael Clark
Washoe County	District 3	Commissioner	Mariluz Garcia
Washoe County	District 4	Commissioner	Clara Andriola
NV State Senate	District 13	State Senator	Skip Daly
NV State Senate	District 14	State Senator	Ira Hansen
NV State Senate	District 15	State Senator	Heidi Gansert
NV State Senate	District 16	State Senator	Lisa Krasner
NV State Assembly	District 24	Assemblymember	Sarah Peters
NV State Assembly	District 25	Assemblymember	Selena La Rue Hatch
NV State Assembly	District 26	Assemblymember	Rich DeLong
NV State Assembly	District 27	Assemblymember	Angie Taylor
NV State Assembly	District 30	Assemblymember	Natha Anderson
NV State Assembly	District 31	Assemblymember	Jill Dickman
NV State Assembly	District 32	Assemblymember	Alexis Hansen
NV State Assembly	District 40	Assemblymember	Philip O'Neill

Appendix 1: Community Outreach Process

List of elected officials contacted during CAP creation (continued from previous page)

Organization	District	Title	Name
Reno City Council	Citywide	Mayor	Hilary Schieve
Reno City Council	At-Large	Councilmember	Devon Reese
Reno City Council	Ward 1	Councilmember	Jenny Brekhus
Reno City Council	Ward 2	Councilmember	Naomi Duerr
Reno City Council	Ward 3	Councilmember	Miguel Martinez
Reno City Council	Ward 4	Councilmember	Meghan Ebert
Reno City Council	Ward 5	Councilmember	Kathleen Taylor
Sparks City Council	Citywide	Mayor	Ed Lawson
Sparks City Council	Ward 1	Councilmember	Donald Abbott
Sparks City Council	Ward 2	Councilmember	Dian Vanderwell
Sparks City Council	Ward 3	Councilmember	Paul Anderson
Sparks City Council	Ward 4	Councilmember	Charlene Bybee
Sparks City Council	Ward 5	Councilmember	Kristopher Dahir

Appendix 1: Community Outreach Process

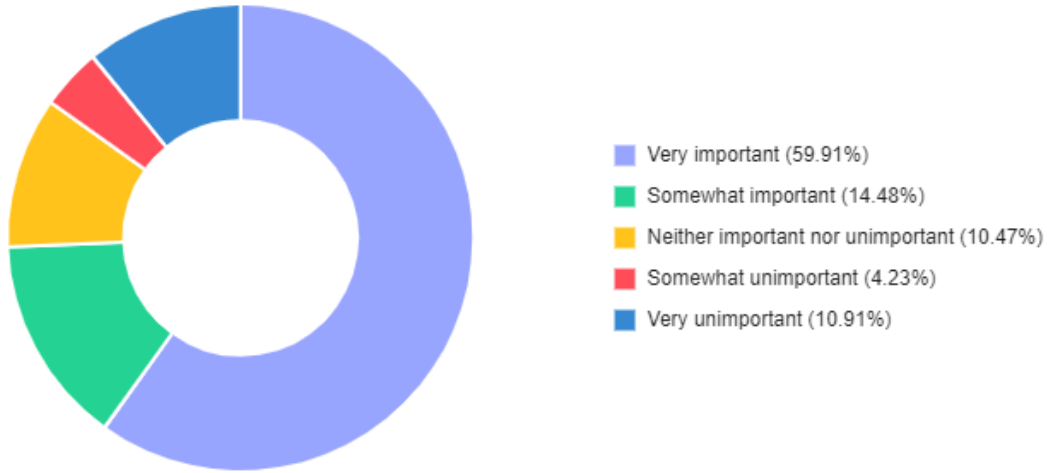
List of elected officials contacted during CAP creation (continued from previous page)

Organization	District	Title	Name
Sun Valley GID	District 3	Chairperson	Susan Severt
Sun Valley GID	District 4	Vice Chair	Michael Rider
Sun Valley GID	District 1	Secretary	Joseph Barstow
Sun Valley GID	District 2	Treasurer	Mark Neumann
Sun Valley GID	District 5	Trustee	Carmen Ortiz
Incline Village GID	Trustee 1	Chair	Sara Schmitz
Incline Village GID	Trustee 4	Vice Chair	Matthew Dent
Incline Village GID	Trustee 5	Treasurer	Ray Tulloch
Incline Village GID	Trustee 3	Secretary	Michaela Tonking
Incline Village GID	Trustee 2	Trustee	Dave Noble
Gerlach GID	Trustee 2	Trustee	Roberta “Bobbie” Barlow
Gerlach GID	Trustee 3	Trustee	Seth Schrenzel
Gerlach GID	Trustee 5	Trustee	Judy Conley
Gerlach GID	Trustee 4	Trustee	Lisa Bertschi
Gerlach GID	Trustee 1	Trustee	Kat McNamara
North Lake Tahoe Fire Protection District	Trustee 5	Chair	Susan Herron
North Lake Tahoe Fire Protection District	Trustee 4	Vice Chair	Greg McKay
North Lake Tahoe Fire Protection District	Trustee 2	Secretary / Treasurer	Denise Bremer
North Lake Tahoe Fire Protection District	Trustee 3	Director	Charley Miller
North Lake Tahoe Fire Protection District	Trustee 1	Director	Jim Castalupoes

“GID” stands for “General Improvement District.”

APPENDIX 2: Survey feedback

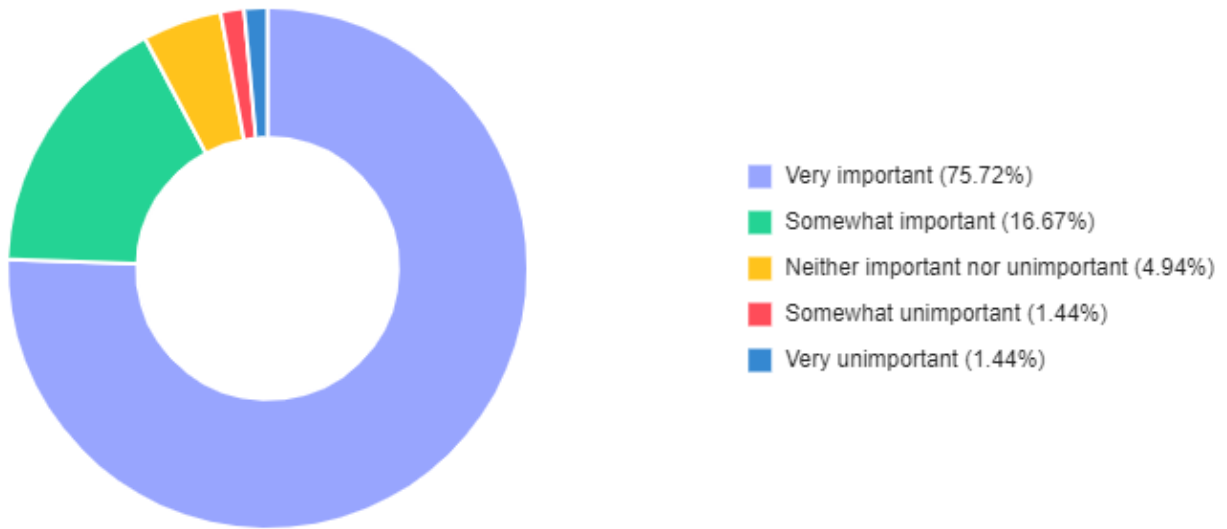
1. How important is it to you that Washoe County reduces its emissions?



Answer Option	Count	Percentage
Very important	269	60%
Somewhat important	65	15%
Neither important nor unimportant	47	10%
Somewhat unimportant	19	4%
Very unimportant	49	11%
Total	449	100%

APPENDIX 2: Survey feedback

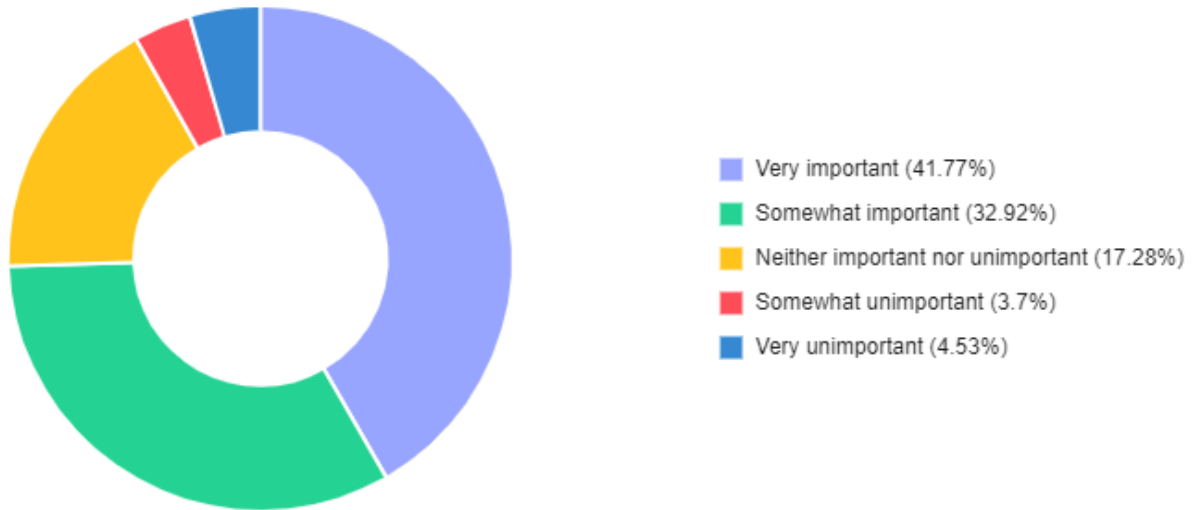
2. How important is “Green” / “Good” air quality to you, as measured by the Air Quality Index (AQI)?



Answer Option	Count	Percentage
Very important	368	76%
Somewhat important	81	17%
Neither important nor unimportant	24	5%
Somewhat unimportant	7	1%
Very unimportant	7	1%
Total	487	100%

APPENDIX 2: Survey feedback

3. How important is it to you that the heat index (“feels like” temperature) is less than 90° F / 32° C on any given day?



Answer Option	Count	Percentage
Very important	203	42%
Somewhat important	160	33%
Neither important nor unimportant	84	17%
Somewhat unimportant	18	4%
Very unimportant	22	4%
Total	487	100%

APPENDIX 2: Survey feedback

4. If these transportation options were affordable and convenient for you, would you like to do any of the following? “Transportation” here is defined as a trip for which the primary purpose is not exercise or recreation.

I currently do this I WOULD like to do this Neutral I WOULD NOT like to do this

1. Walk for transportation (including with assistive devices)



2. Use a bicycle, scooter, skateboard, wheelchair, or other personal mobility vehicle for transport



3. Use public transport (eg bus)



4. Lease or purchase an electric vehicle



6. Take a shuttle bus to destinations like Lake Tahoe, Carson City, or the Tahoe-Reno Industrial Center (TRIC)



7. Take a high speed train to Las Vegas



APPENDIX 2: Survey feedback

4. (continued from previous page: table version) If these transportation options were affordable and convenient for you, would you like to do any of the following?

“Transportation” here is defined as a trip for which the primary purpose is not exercise or recreation.

Answer Option	I currently do this	I WOULD like to do this	Neutral	I WOULD NOT like to do this	Total
Walk for transportation (including with assistive devices)	21%	30%	26%	23%	100%
	92	129	111	100	432
Use a bicycle, scooter, skateboard, wheelchair, or other personal mobility vehicle for transport	14%	31%	25%	30%	100%
	61	133	108	130	432
Use public transport (eg bus)	3%	38%	25%	34%	100%
	15	162	109	146	432
Lease or purchase an electric vehicle	10%	1%	18%	34%	100%
	43	163	78	148	432
Take a shuttle bus to destinations like Lake Tahoe, Carson City, or the Tahoe-Reno Industrial Center (TRIC)	2%	48%	24%	26%	100%
	8	207	106	111	432
Take a high speed train to Las Vegas	0%	55%	20%	25%	100%
	3	236	87	106	432

APPENDIX 2: Survey feedback

5. If these residential energy use options were affordable and easy for you, would you like to do any of these?

I currently do this I WOULD like to do this Neutral I WOULD NOT like to do this

1. Have a technician conduct an energy audit at my home to identify energy savings opportunities



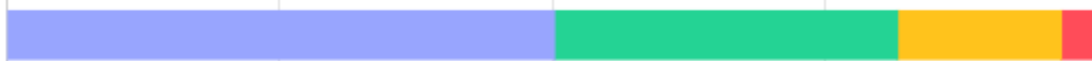
2. Replace low efficiency lightbulbs (eg incandescent) with high efficiency lightbulbs (eg light-emitting diode / LED, compact fluorescent lamps / CFL, or halogen)



3. Use a programmable thermostat to set heating / cooling schedules that save energy



4. Add caulking to my windows to reduce energy use



5. Add insulation to my home to reduce energy use



6. Get an electric heat pump for heating / cooling my home



7. Use renewable energy (eg solar, wind power, geothermal or hydropower) to generate the electricity that comes into my home



APPENDIX 2: Survey feedback

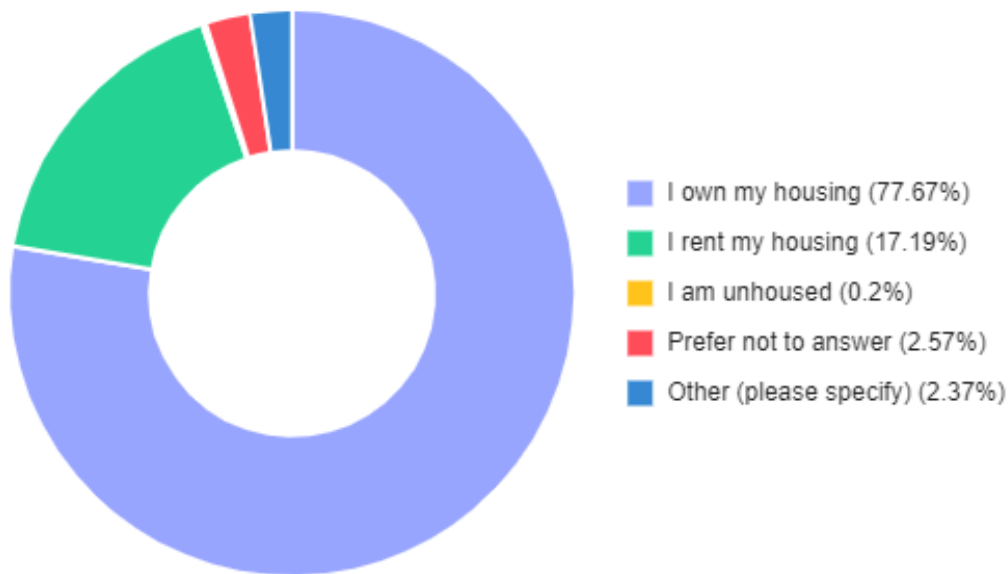
5. (continued from previous page: table version) If these residential energy use options were affordable and easy for you, would you like to do any of these?

Answer Option	I currently do this	I WOULD like to do this	Neutral	I WOULD NOT like to do this	Total
Have a technician conduct an energy audit at my home to identify energy savings opportunities	17%	43%	23%	16%	100%
	74	184	100	68	426
Replace low efficiency lightbulbs (eg incandescent) with high efficiency lightbulbs (eg light-emitting diode / LED, compact fluorescent lamps / CFL, or halogen)	76%	14%	5%	5%	100%
	324	59	22	21	426
Use a programmable thermostat to set heating / cooling schedules that save energy	63%	18%	8%	11%	100%
	269	75	34	48	426
Add caulking to my windows to reduce energy use	50%	32%	15%	3%	100%
	214	134	64	14	426
Add insulation to my home to reduce energy use	40%	42%	13%	5%	100%
	172	177	57	20	426
Get an electric heat pump for heating / cooling my home	8%	41%	33%	18%	100%
	36	175	139	76	426
Use renewable energy (eg solar, wind power, geothermal or hydropower) to generate the electricity that comes into my home	16%	57%	16%	11%	100%
	66	243	68	49	426

APPENDIX 2: Survey feedback

We are including some demographic details about survey respondents. Our goal was for the identities of survey respondents to mirror the demographics of Washoe County. Some demographics (eg Hispanics, renters, adults younger than 55 years old) are under-represented in survey results, so we have reached out to community groups affiliated with those demographics to hear feedback directly in small group sessions.

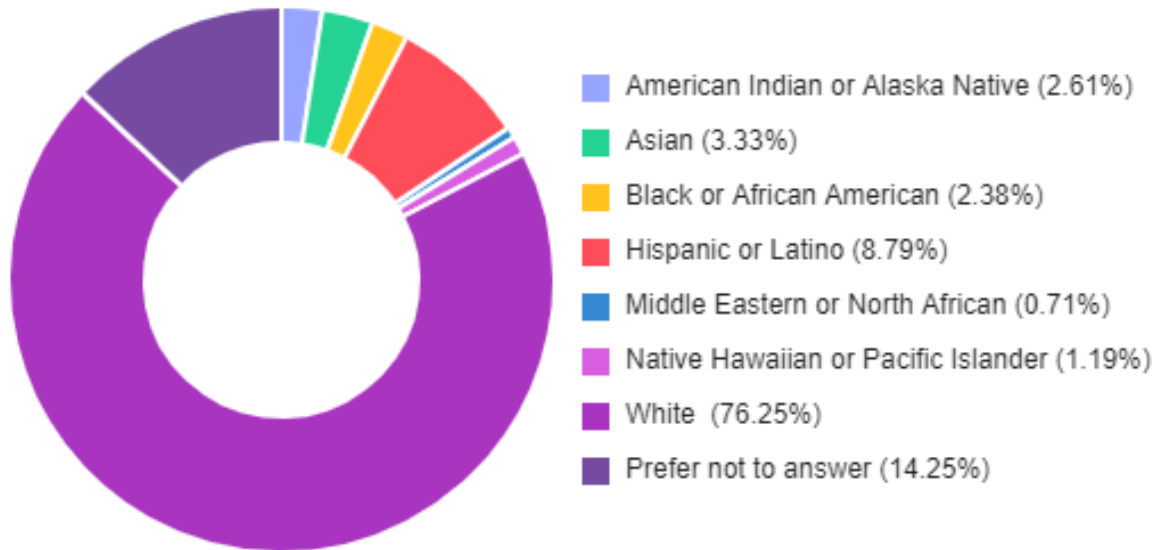
6. What best describes where you live?



Answer Option	Count	Percentage
I own my housing	393	78%
I rent my housing	87	17%
I am unhoused	1	0%
Prefer not to answer	13	2.5%
Other (please specify)	12	2.5%
Total	506	100%

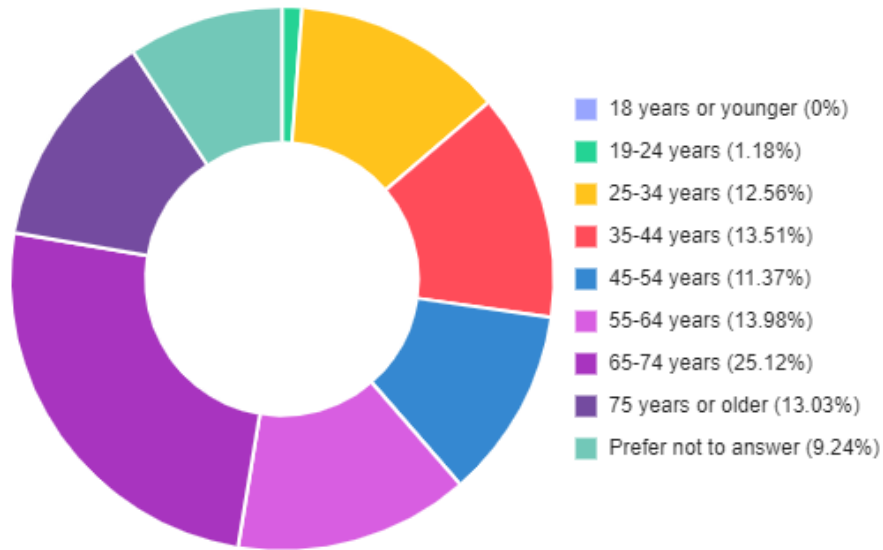
APPENDIX 2: Survey feedback

7. What is your race and / or ethnicity? (select all that apply)



Answer Option	Count	Percentage
American Indian or Alaska Native	11	2%
Asian	14	3%
Black or African American	10	2%
Hispanic or Latino	37	8%
Middle Eastern or North African	3	1%
Native Hawaiian or Pacific Islander	5	1%
White	321	70%
Prefer not to answer	60	13%
Total	461	100%

8. Select which age group you are currently in:



Answer Option	Count	Percentage
18 years or younger	0	0%
19-24 years	5	1%
25-34 years	53	13%
35-44 years	57	14%
45-54 years	48	11 %
55-64 years	59	14%
65-74 years	106	25%
75 years or older	55	13%
Prefer not to answer	39	9%
Total	422	100%

APPENDIX 3: Other regional plans that support climate action

Type	Entity	Document	Year	Purpose
County	Washoe County	Community GHG Inventory	2021	Measures Community-wide emissions for Washoe County. <i>Link to come in final draft.</i>
County	Washoe County	Green Recovery Plan	2022	Focuses on specific recovery strategies identified in the COVID19 – 2021 Recovery Action Plan that help to build on Washoe County’s environmental and sustainability initiatives, and address the identified impacts associated with infectious disease in the Regional Hazard Mitigation Plan.
County	Washoe County	Envision 2040 Master Plan	2023	A community driven process aimed at updating the County’s Master Plan and Development Code to focus on the goals, policies, codes, and programs needed for our diverse and dynamic community to thrive in the next ten to twenty years.
State	Nevada Department of Environmental Protection (NDEP)	Statewide Greenhouse Gas Emissions Inventory and Projections, 1990 - 2042	2022	Measures statewide emissions. Includes section “Policies that Could Achieve Reductions in Projected Greenhouse Gas Emissions by Sector”
State	Nevada Department of Environmental Protection (NDEP)	State Priority Climate Action Plan	2024	Statewide GHG inventory, emission projections, and priority measures across six focus areas. Each focus area has quantified emissions reductions, a low-income and disadvantaged communities (LIDACs) benefits analysis, and a description of authority to implement.

APPENDIX 3: Other regional plans that support climate action

Type	Entity	Document	Year	Purpose
Tribal Nation	Reno Sparks Indian Colony (RSIC)	2040 Comprehensive Plan	2024	Includes information and strategies to protect air quality, mitigate climate change effects, promote renewable energy, conserve-protect water resources, and preserve habitat and wildlife within the Reno-Sparks Indian Colony
Regional	Truckee Meadows Regional Planning Agency (TMRPA)	Truckee Meadows Regional Plan	2019	Describes the type, location, and pattern of growth and development that local governments and agencies in the region believe will best deliver the multiple aspects of quality of life desired by current and future residents of our area.
Regional	Tahoe Regional Planning Authority (TRPA)	Regional Plan	2012	Outlines actions to attain these thresholds that restore Lake Tahoe while balancing economic and community vitality.
Regional	Northern Nevada Public Health (NNPH)	Ozone Advance Plan	2016	Looks backward at what occurred to improve ozone concentrations; provides leadership the data and information needed to make good decisions that improve long-term air quality.

APPENDIX 3: Other regional plans that support climate action

Type	Entity	Document	Year	Purpose
City	City of Reno	2019 – 2024 Sustainability & Climate Action Plan	2019	Establishes well-focused initiatives that promise to strengthen Reno’s reputation as one of the world’s leading cities while also improving the day-to-day quality of life for all of the City’s residents.
General Improvement District (GID)	Incline Village	Public Works Annual Sustainability Report	2020	A vehicle for Public Works to respond to heightened stakeholder expectations for transparent disclosure of economic, social, and environmental effects of our organization on our community.
General Improvement District (GID)	Gerlach	GHG report	2024	<i>Link to be included with Final Draft</i>
Agency	Washoe County Regional Transportation Commission (RTC)	Regional Transportation Plan (RTP) 2050	2021	Identifies the long-range vision for connecting the Reno-Sparks urbanized area.
Agency	NV Energy	Integrated Resource Plan (IRP)	2024	Forward-looking, comprehensive plan that looks at future energy needs for our customers and how the company plans to meet the present and long-term needs of our current and future customers.

APPENDIX 4: SMARTIE goals for Tier 1 CAP Actions

SMARTIE goals are (Strategic, Measurable, Ambitious, Realistic, Time-bound, Inclusive, and Equitable)

#	Action	Draft SMARTIE goal, to be improved in project plan
Strategy 1: Achieve County-wide Net Zero 2050 alignment		
1	Measure Community GHG emissions every 5 years. The next inventories will be for 2024 (in 2025) and for 2029 (in 2030).	Action is a SMART goal.
2	Create a public dashboard to track Community CAP actions by the end of 2025. Post public updates on Community CAP actions at least once annually.	Action is a SMART goal.
3	Create forecast of estimated emissions reductions through 2050 based on Community CAP actions by 2025.	Action is a SMART goal.
4	Washoe County will write and implement a County Operations Climate Action Plan.	County Operations CAP to be approved by the Washoe County Commission by April 2025. Sustainability team to implement actions on the schedule defined in the plan.
5	Document the health impacts of air pollution and heat on Washoe County and its residents to improve public communication and success of grant applications.	By June 2025, calculate community return-on-investment (ROI) of at least 3 Community CAP actions, at least 1 with equity as the primary focus.
6	In preparation for Waste Management franchise agreement negotiations in 2028 (current contract ends in 2030), identify strategies to reduce waste and waste-related emissions for the future.	By June 2027, define a zero waste strategy for the County and a list of the individual services needed to support zero waste, emphasizing services for communities of Environmental Justice concern.
7	By 2030, identify long-term funding strategy for transportation infrastructure in Washoe County that is not the gas tax.	In advance of 2031 state legislative session, identify legislative and policy actions needed to secure sustainable long-term funding for transportation infrastructure. Avoid "regressive" strategies that place disproportionate burden on low-income individuals.

APPENDIX 4: SMARTIE goals for Tier 1 CAP Actions

SMARTIE goals are (Strategic, Measurable, Ambitious, Realistic, Time-bound, Inclusive, and Equitable)

#	Action	Draft SMARTIE goal, to be improved in project plan
Strategy 1: Achieve County-wide Net Zero 2050 alignment		
8	Advocate that net zero 2050 be a foundational premise in RTC Washoe's "Regional Transportation Plan 2050" update in 2025.	Action is a SMART goal.
9	Share resources, advocate adoption of Net Zero 2050 policy with City of Sparks.	City of Sparks adopts Net Zero 2050 policy by 2030.
10	Amongst all businesses registered in Washoe County, grow the number of businesses with sustainability plans or green business certifications (eg Nevada Green Business Certification, etc.) to 70% by 2030.	Action is a SMART goal. Encourage money-saving sustainability upgrades, particularly for Disadvantaged-Owned Business Enterprises (DBEs).
11	Grow Washoe County Sustainability email list to an audience of 5,000.	Action is a SMART goal. Conduct outreach / invitations to community members in proportions that mirror the demographics of Washoe County.
12	Send a spotlight communication about Washoe County's Climate Action Activities at least quarterly.	Action is a SMART goal. - Updates to include information about how the County's Actions encourage equity.
13	Participate in at least two community events across the region each year to share information about Climate Action Planning and to hear residents' continued feedback.	Action is a SMART goal. - vary events and locations to expand access to County information and to increase the diversity of perspectives that the County hears.
14	Develop interactive communications that allow individuals to take climate action and spread knowledge with others.	By June 2026, identify interactive engagement strategy (eg ambassadors, local influencers; digital engagement), and secure budget to support community member training and / or campaign implementation across communities that mirror the demographics of Washoe County.

APPENDIX 4: SMARTIE goals for Tier 1 CAP Actions

SMARTIE goals are (Strategic, Measurable, Ambitious, Realistic, Time-bound, Inclusive, and Equitable)

#	Action	Draft SMARTIE goal, to be improved in project plan
Strategy 2: Implement net zero land use principles		
15	Advocate for a planning manager to be assigned to the Envision 2040 Master Plan by 2025 to facilitate implementation of the GHG-reducing elements of Envision 2040.	Action is a SMART goal. Once planning manager is in place, advocate to prioritize actions that have largest equitable impacts.
16	Support Tribes with their environmental stewardship and Land Use plans.	Requires discussion.
17	Partner with regional jurisdictions, agencies, stakeholders and citizens to launch a Community Forestry Program. Plant 4,700 more trees in Low-Income and Disadvantaged Communities (LIDACs) by 2030.	Action is a SMARTIE goal.

APPENDIX 4: SMARTIE goals for Tier 1 CAP Actions

SMARTIE goals are (Strategic, Measurable, Ambitious, Realistic, Time-bound, Inclusive, and Equitable)

#	Action	Draft SMARTIE goal, to be improved in project plan
Strategy 3a: Reduce emissions, Transportation		
18	Create an online hub to amplify information about alternatives to single occupancy vehicles (SOVs) for recurring trips. (eg Safe Routes to School, carpooling, existing transit or bicycle infrastructure).	Transportation hub of Sustainability website updated by June 2025. Plan should particularly focus on strategies that work in communities of Environmental Concern.
19	Create and distribute sustainable transportation guides for Washoe County’s 12 libraries, 49 parks, ~50 voting locations, and 14 buildings with walk-in services.	Sustainable transportation guides for all County facilities online by June 2026.
20	Pursue a Trip Reduction Ordinance for Washoe County.	Bring a Trip Reduction Ordinance to Washoe County Commission by 2027.
21	Align regional efforts to reduce SOV trips to the region's top employment areas (eg Tahoe-Reno Industrial Center (TRIC), Reno / Sparks casinos, Lake Tahoe recreation).	Document existing trip-reduction efforts by June 2025; identify gaps and possible upgrades by June 2026; fund upgrades by 2030.
22	Expand reliable broadband across Washoe County to enable more telecommuting.	Implement the County's Digital Equity strategy by 2030.
23	Work with transportation and tourism partners to educate visitors about car-free ways to enjoy Reno, Sparks, Lake Tahoe, and other points of interest in and around Washoe County.	By 2025, Sustainable transportation guidance is listed major tourism websites; by 2026, a collaborative communications plan is designed to fill gaps in sustainable transportation and to make Washoe County a more accessible destination for visitors.

APPENDIX 4: SMARTIE goals for Tier 1 CAP Actions

SMARTIE goals are (Strategic, Measurable, Ambitious, Realistic, Time-bound, Inclusive, and Equitable)

#	Action	Draft SMARTIE goal, to be improved in project plan
Strategy 3a: Reduce emissions, Transportation		
24	Support and accelerate RTC Washoe's Walk and Roll plan by seeking grant funding, collecting data to accelerate the 12 neighborhood plans being designed by 2030.	At least 6 neighborhood plans implemented by 2030; Plans for the remaining neighborhoods to have a completion timeline of 2032 or earlier.
25	By 2026, create a regional plan for an equitable network of EV chargers; by 2028, create a plan to begin funding the EV charging network.	Action is a SMARTIE goal.
26	Create, support, and/or accelerate a plan to make Washoe County's I-80 corridor the nation-wide leader in alternative fuel charging.	By 2030, implement at least one pilot or permanent project that improves alternative fueling for commercial vehicles.

APPENDIX 4: SMARTIE goals for Tier 1 CAP Actions

SMARTIE goals are (Strategic, Measurable, Ambitious, Realistic, Time-bound, Inclusive, and Equitable)

#	Action	Draft SMARTIE goal, to be improved in project plan
Strategy 3b: Reduce emissions, Commercial Buildings		
27	Establish an opt-in Building Performance System (BPS) for commercial buildings to identify energy efficiency opportunities and support.	By 2030, 20% of registered businesses in Washoe County participate in the BPS program.
28	Adopt "ambitious" (instead of "standard") 2024 and 2027 International Energy Conservation Codes (IECC).	Action is a SMART goal.
29	Integrate sustainability into government procedures by providing resources during planning and permitting processes (eg provide information about heat pumps to requestors of permits to install new chillers / heaters / boiler).	By June 2025, list government processes that have potential for sustainability upgrades. By 2027, include sustainability information in the customer process of at least one government process.

APPENDIX 4: SMARTIE goals for Tier 1 CAP Actions

SMARTIE goals are (Strategic, Measurable, Ambitious, Realistic, Time-bound, Inclusive, and Equitable)

#	Action	Draft SMARTIE goal, to be improved in project plan
Strategy 3c: Reduce emissions, Residential Buildings		
30	Create virtual and / or physical resource hubs for homeowners and renters to learn how to make sustainable upgrades.	By June 2025, expand Sustainability website's existing resource hub. Create draft plan for a physical hub, in anticipation of potential funding opportunity. Focus solutions for low-income populations.
31	Amplify awareness of existing home energy efficiency programs such as NV Energy's free energy efficiency audit; Nevada Clean Energy Fund's Residential Energy Upgrade Program (RE-UP); Nevada Housing Division's Weatherization Assistance Program (WAP); and the federal Home Electrification and Appliance Rebates (HEAR) program.	By June 2025, learn existing customer uptake rate of existing home energy efficiency programs. By June 2026, agree with program administrators on increased participation rate (eg, 10%). Prioritize promotion of income-qualified programs.
32	Create a program to convert mobile home power from gas to electric.	By June 2026, draft a plan that could convert at least 30% of mobile homes from gas to electric by 2030. By June 2028, share a case study of one successful conversion.
33	By 2030, implement at least one sustainable retrofit incentive for rental properties serving income-qualified tenants (Tacoma Public Utilities example).	Action is a SMARTIE goal.
34	By 2026, create toolkit, identify incentives, and identify lending facilities for owners of multi-family, affordable housing, and senior living facilities to make their buildings more energy-efficient.	By 2026, create a toolkit of resources and identify a metric to track progress on increasing building energy efficiency.

APPENDIX 4: SMARTIE goals for Tier 1 CAP Actions

SMARTIE goals are (Strategic, Measurable, Ambitious, Realistic, Time-bound, Inclusive, and Equitable)

#	Action	Draft SMARTIE goal, to be improved in project plan
Strategy 3d: Reduce emissions, Waste		
35	Identify and support food-waste composting pilot projects and providers for both residential and commercial needs.	100% of Washoe County businesses and residents have access to commercial or at-home composting by 2028.
36	Identify and support green-waste composting models and providers for both residential and commercial needs.	100% of Washoe County businesses and residents have access to green waste composting by 2030.
37	Provide administrative support to community waste-reduction working groups.	By June 2025, design working group charters, incorporating community feedback. Document group needs and identify budget and / or resources required to support working group communication and collaboration.

APPENDIX 4: SMARTIE goals for Tier 1 CAP Actions

SMARTIE goals are (Strategic, Measurable, Ambitious, Realistic, Time-bound, Inclusive, and Equitable)

#	Action	Draft SMARTIE goal, to be improved in project plan
Strategy 4: Produce Cleaner Energy		
38	Review NV Energy's progress toward commitment of 50% electricity from renewable sources by 2030; help remove barriers.	By 2026, learn barriers to NV Energy's 50% renewable sources commitment; by 2027, create plan to remove barriers if necessary. Create metrics to track progress.
39	Identify new federal programs to implement related to solar energy (eg R-PACE); apply to new grants supporting expanded solar capacity.	Create list of federal opportunities by December 2025. Identify up to 3 programs to pursue, at least 1 with an equitable focus; implement 1 program by 2030.
40	Identify opportunities and expand distributed energy resources like Community Solar, Solar Gardens, microgrids, smart-grids, behind-the-meter technology, and net metering.	Define tracking mechanism for solar progress by June 2025. Double the amount of community solar by 2028; focusing on neighborhoods with high energy burden (large % of total income goes to energy costs).
41	Promote financing options available through the existing Commercial Property-Assessed Clean Energy (C-PACE) Program for local businesses.	Enroll 6 C-PACE customers each year through 2030.
42	Speed and streamline residential and commercial solar permitting through programs like SolSmart.	Obtain SolSmart Bronze level by 2026; Silver level by 2030.
43	Support implementation of grants, incentives and other federal funding opportunities to expand solar, especially for low-income residents. (eg Nevada Clean Energy Fund's implementation of its Solar for All)	At least two solar programs are launched in Low Income, Disadvantaged Communities (LIDACs) by 2030.
44	Ensure geothermal options are understood and considered during the pre-construction phase of new buildings.	By 2025, document the County services in which geothermal can be introduced; by 2028, include geothermal education as part of standard permitting processes.

APPENDIX 5: Key Performance Indicator (KPI) details

#	KPI	Source	Current (2024)	Target (2030)	Change
---	-----	--------	----------------	---------------	--------

Strategy 2: Implement net zero land use principles

1	"Good Growth"	<i>accepted metric does not exist yet</i>	n/a	implementation of Envision 2040	n/a
2	Tree Equity	Tree Equity Score .org	33	0	-33

Strategy 3: Reduce emissions

a. TRANSPORTATION: Reduce the amount of fossil fuels used in transportation

3	Vehicle Miles Traveled (VMT)	NV Department of Transportation	3,871,217,092	3,484,095,383	-10%
4	Mode Split	RTC Washoe	Vehicle (94%) Walk (3%) Bike (1%) <u>Transit (2%)</u> Total 100%	Vehicle (88%) Walk (6%) Bike (2%) <u>Transit (4%)</u> Total 100%	-6% +3% +1% +2%
5	Zero Emissions Vehicles (ZEVs)	NV Department of Motor Vehicles	1.30%	10%	7.7x

b. BUILDINGS: Reduce energy use in commercial buildings

6	KWh / building / year (Commercial)	NV Energy	awaiting data	TBD	-5%
---	------------------------------------	-----------	---------------	-----	-----

c. BUILDINGS: Reduce energy use in residential buildings

7	Kwh / dwelling / year (Residential)	NV Energy, SW Gas	awaiting data	TBD	-5%
---	-------------------------------------	-------------------	---------------	-----	-----

d. WASTE Reduce energy associated with landfill operations

8	Per capita waste (lbs)	Waste Management	132	125	-5%
---	------------------------	------------------	-----	-----	-----

Strategy 4: Produce cleaner energy

9	Natural Gas use (therms)	NV Energy, SW Gas	XX	X	TBD
10	% renewable purchased electricity	NV Energy	TBC	50%	TBD
11	Solar power generation	Energy Information Administration	X	XX	2X

APPENDIX 4: Key Performance Indicator (KPI) details

Calculation methodology for KPIs

1. **“Good growth”** – Industry-accepted, easy-to-calculate metric does not yet exist.
2. **Tree Equity** - # of “block groups” in Washoe County with a Tree Equity score < 70 (source: [Tree Equity Score](#))
3. **Vehicle Miles Traveled (VMT)** - VMT by all vehicle types in Washoe County (source: [Nevada Department of Transportation](#))
4. **Mode Split** % of trips by different modes in Washoe County during the calendar year (source: RTC Washoe)
5. **Zero Emissions Vehicles (ZEVs)** # of ZEVs registered in Washoe County through the NV Dept of Motor Vehicles, divided by total registered vehicles (source: NV Department of Motor Vehicles)
6. **KwH / building / year (Commercial)** # of KwHs used by all commercial buildings in Washoe County, divided by the total number of commercial buildings served (source: NV Energy)
7. **KwH / dwelling / year (Residential)** # of KwHs used by all commercial buildings in Washoe County, divided by the total number of dwellings served (source: NV Energy)
8. **Per capita waste (lbs)** Annual pounds (lbs) of all landfill and recycling waste generated by members of Washoe County and processed by Waste Management, divided by population (Source: Waste Management)
9. **Natural Gas use** Total number of therms used in the community (source: NV Energy, Southwest Gas)
10. **% renewable purchase electricity** NV Energy’s electricity generation breakdown (source: NV Energy)
11. **Solar power generation** KwH of solar power generated in the community (source: various)