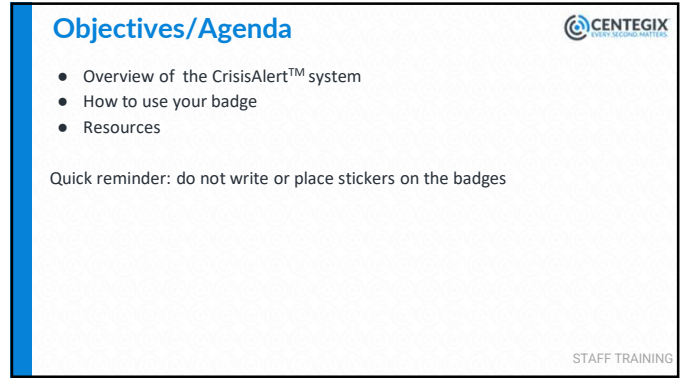




1



2



3



4



5



6

HOW TO INITIATE:

Staff Alert "I Need Help" 98% of usage

Situations requiring a Staff Alert:

- Medical emergency
- Fight
- Elopement
- Custody issue


Click the Badge **THREE TIMES:**
You will receive short vibration feedback

Lockdown 0-2%

When you need to hard lockdown a site:

- Campus Threat
- Visible weapon

KEEP CLICKING the Badge: You will receive a long vibration feedback



STAFF TRAINING

7

WHAT HAPPENS:


Staff Alert "I Need Help"

Site responders will be notified

Lockdown

Site and district responders will be notified

Additional actions occur



Desktop and Mobile App Responder and Site Admin

STAFF TRAINING


8

LOCKDOWN VIA A BADGE

When a CrisisAlert™ Badge is clicked repeatedly


Several actions are triggered simultaneously:

Visual Cues




Alert strobes flash

Instruction



Staff computers display instruction


Site Responders



Responders' electronic devices notified

Auditory Cues

Intercom message.



9




LOCKDOWN!

- MOVE students to a secure location behind a lockable door or, if you are unable to secure your location, independently Evacuate.
- LOCK the door(s).
- LIGHTS OFF.
- COVER WINDOWS.
- NO NOISE Phone or radio (no intercom) may be used to contact 9-1-1 or the office, but only if safe to do so.

Press the escape key to exit this screen

10

HOW TO WEAR A BADGE



How to Wear the Badge

- Attach the badge so the button is being covered by your staff ID when hanging loosely
- Keep it accessible and take it with you as you leave campus.
- Inadvertent badge presses do happen. If this occurs, try to investigate possible causes (badge held against books, put in desk drawer with other items, etc.)

YOU SHOULD WEAR YOUR BADGE AT ALL TIMES

STAFF TRAINING

11

CAMPUS WIDE ALERTS

Activated by the Administrator




RED
Lockdown (Code Red)



AMBER
Secured Campus (Code Yellow)



ORANGE
Evacuation



PURPLE
Shelter-in-Place

12

Badge FAQ

- Is the badge waterproof?
 - It is water resistant
- Does the badge interfere with medical devices such as a pacemaker?
 - According to the American Heart Association, Bluetooth and other wireless technologies pose little to no risk on the performance of ICDs and Pacemakers.
 - The CrisisAlert™ Badge uses a transmitter comparable in power to a Bluetooth headset or wireless speaker.
- How hot can the badge get?
 - Badges are rated up to 135°F
- How long does the battery in the badge last?
 - Badges last between 3-5 years depending on the amount of use.

13

ADDITIONAL NOTES

- Your location is only shared when the badge is pressed.
- Please do not write on the badges.
- If your badge is lost, please notify administration immediately so it can be deactivated.
- Badges work inside and outside on campus but NOT off campus.

14

RECAP OF BADGE

3 CLICKS




Staff Alert
"I Need Help"
Room/Area Issue,
Medical, Fight

CONTINUED CLICKS



Campus Wide Alert
Lockdown
Site/Region/District Issue,
Campus Wide Threat



STAFF TRAINING

15

CrisisAlert™ Quick-Start Guide

SCAN ME

CrisisAlert Badges:

- Your badge (along with your school ID) should be worn every day.
- It is better to wear the badge around the neck (clipped to your shirt) or on your lanyard.
- Do not leave it unattended or accessible to students.
- Do not give or attach anything to the badge.
- Do not scratch, puncture, bend or otherwise damage the integrity of the badge.

This badge will only be used if the event you are contacted the office is a true emergency!

Staff Alert (Administration will respond)

- Click the badge 3 times (you will receive a short vibration feedback)
- Administration will respond.
- This is when you need individual assistance for an issue or incident:
 - Medical emergency
 - Physical altercation
 - Suspicious activity
- There will not be a text (SMS) or Beacon Pushes - the entire school will not be aware of this incident.
- When able to do so, contact the front office with more information.**

Code Red - Lockdown (Entire campus and WCCSPD will be notified)

This is when you need individual assistance and to protect the building from a crime or emergency that involves the building system or other equipment that may cause death or injury and action is needed to save lives.

- Continue clicking your badge until you are in lockdown.
- Do not touch anything, avoid touching anything.
- Do not use elevators.
- A digital lockdown message will appear on all campus computers.
- WCCSPD will know your location and respond.
- When able to do so, contact the front office with more information.**

EMERGENCY MANAGEMENT

16

Next Steps

Staff Training - DONE!
YOUR SITE IS LIVE

Now follow these next steps:

- Put the system into **badge training mode**
- Distribute badges one at a time and have all staff practice a staff alert, ensuring the badge is working and properly assigned

STAFF TRAINING

17