



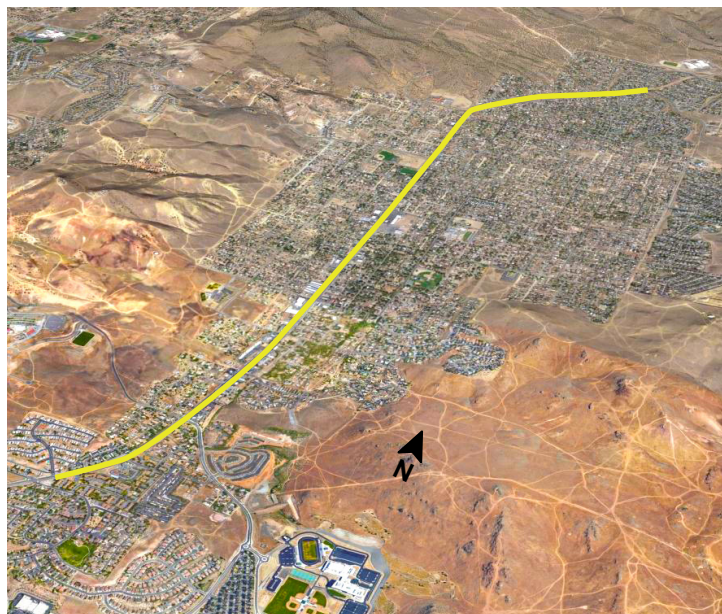
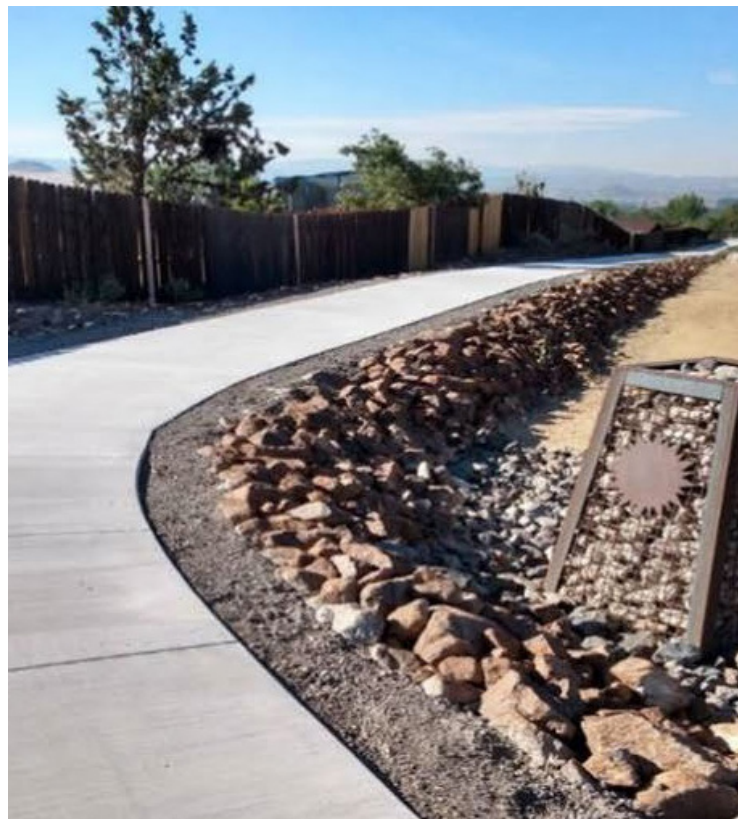
RTC Sun Valley Improvements

\$27M Preliminary Project Cost Estimate

Phase 2: Scottsdale Road to 7th Avenue

Sun Valley Boulevard is the main corridor for the Sun Valley community and serves as an important north/south connector to residential neighborhoods, schools, community services, and commercial businesses. It also serves as the primary access to US 395. Transit ridership and pedestrian activity are prevalent in Sun Valley, however, there is currently limited pedestrian infrastructure along Sun Valley Boulevard and within the valley to improve safety and better serve pedestrian needs.

The RTC completed the Sun Valley Boulevard Corridor Study in 2015 and established a vision for transportation improvements along the corridor from Clear Acre Lane/Scottsdale Road to Highland Ranch Parkway. Proposed improvements include pedestrian, bicycle, transit, and traffic safety improvements within the corridor primarily through reconfiguration of the existing right-of-way.



Pedestrian and wheelchair facility improvements and continuous access along Sun Valley Boulevard are high priorities according to public input. A continuous sidewalk on both sides of Sun Valley Boulevard is included as part of the preferred alternatives. In most cases, the addition of a sidewalk will involve replacing the existing roadside ditch with curb, gutter, sidewalk, and installing stormwater infrastructure. This plan is consistent with the Sun Valley Area Plan.

In addition to sidewalk improvements, other proposed pedestrian safety improvements include installing flashing beacons and refuge islands at various locations. Sun Valley Boulevard currently has a dis-contiguous bicycle network consisting of a mix of striped bicycle lanes, paved shoulders, and a limited shoulder that requires a bicyclist to ride in the travel lane. Improved bicycle facilities are included with the preferred alternatives to provide safe bicycle travel along Sun Valley Boulevard.

Improvements including intersection reconfigurations were considered for areas with elevated crash frequencies which will help alleviate existing traffic congestion and improve safety. Sun Valley Boulevard traffic patterns will largely remain the same as lane reductions or widening were not proposed as part of the study.

Construction of Phase I from 7th Avenue to Highland Ranch Parkway (1.5 miles) was completed in May 2021 and included approximately \$6.7 million in improvements consistent with the Corridor Study proposed improvements.

Phase 2 will complete the section of Sun Valley Boulevard from Scottsdale Road to 7th Avenue.

For additional information, contact Doug Maloy, Engineering Manager, by phone (775) 335-1865 or by email, dmaloy@rtcwashoe.com.



rtcwashoe.com

Building a Better Community
Through Quality Transportation

