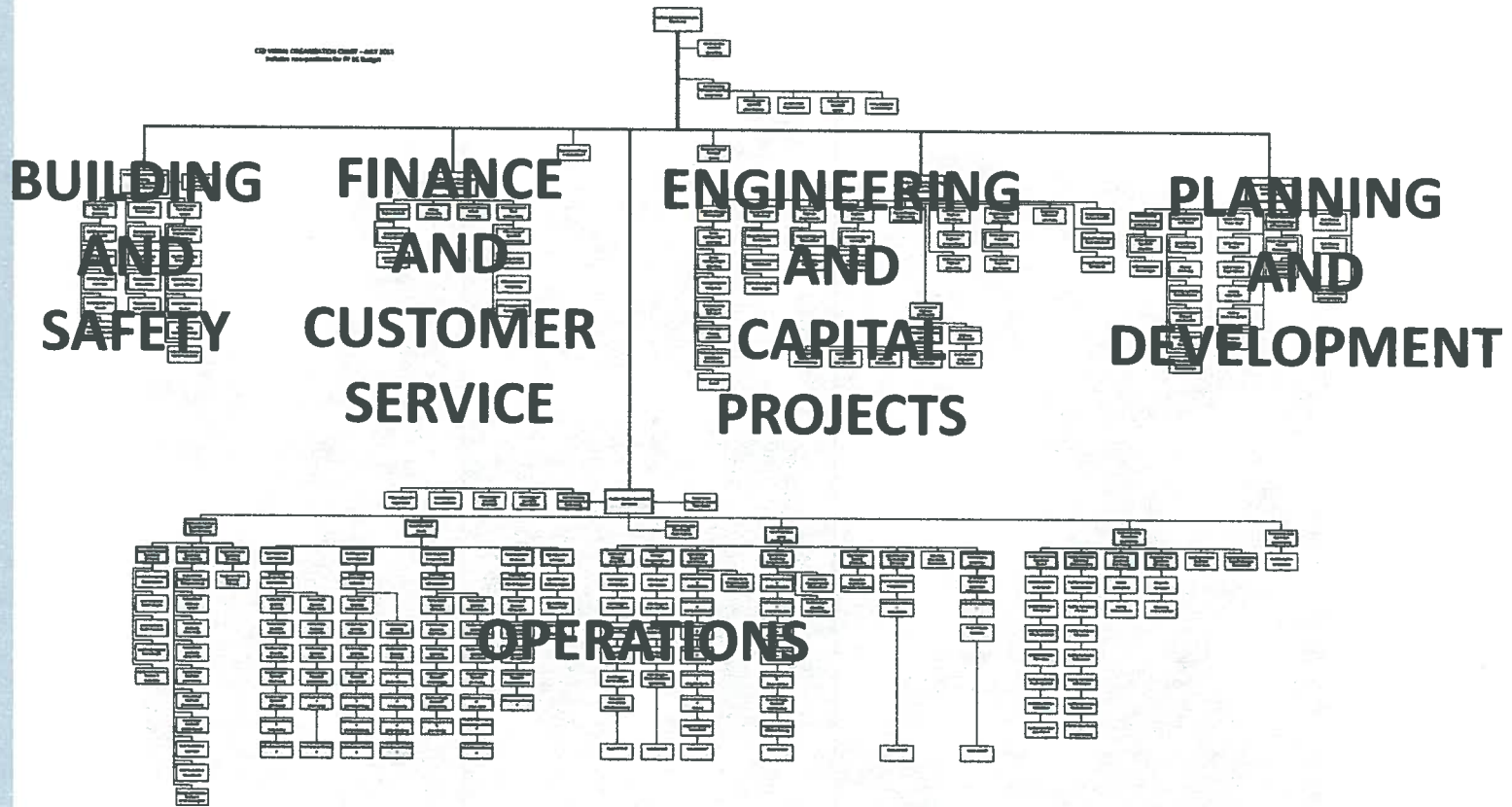




Community Services Department





Community Services Department affects your daily experience.





Community Services Department affects your daily experience.





Community Services Department affects your daily experience.





Community Services Department affects your daily experience.





Community Services Department affects your daily experience.





Community Services Department affects your daily experience.





Community Services Department affects your daily experience.





Community Services Department affects your daily experience.





Community Services Department

QUICK FACTS

Full Time Staff – 227

Part Time Staff – avg. 89

Divisions - 5

Boards and Commissions – 13

Miles of roads – 1,077

Square feet of buildings – 2,643,000

Acres of parks – 12,018

Number of fleet assets – 1,100

Sewer plants - 3

Annual average building permits applied for – 3,100

Building inspections – 20,500

Annual average development applications – 100

Commissioner requests in calendar year 2015 – 61

General fund budget – \$22,400,000



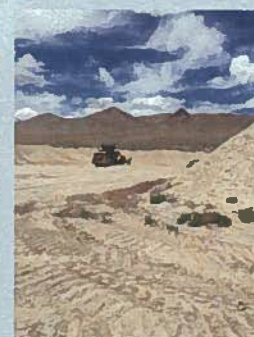
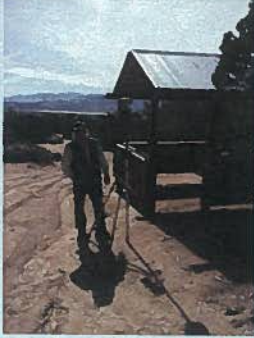
Community Services Department



[Click here to see our impact on the community](#)



Community Services Department affects your daily experience.



SURVEY
EDUCATION
POLLUTION REDUCTION
WILDLIFE ASSISTANCE
EMERGENCY RESPONSE
FACILITY CARE
SIGNAGE
CONSTRUCTION
ROADWAY PREPARATION
DESIGN
CODE COMPLIANCE



Community Services Department affects your daily experience.



MAPPING
PLANNING
HELPING
INSPECTING
COLLABORATING
UNDERSTANDING
EDUCATING
MOWING
LOTS AND LOTS OF
MOWING



Community Services Department affects your daily experience both today and TOMORROW!





Community Services Department

CONTACT US:

www.washoecounty.us/csd

Main number : (775)328-3600

Road Concerns : (775)328-2180

Utility Billing : (775)954-4601

Building and Safety : (775)328-2020

Business License : (775)328-3733

Park Reservations : (775)823-6501